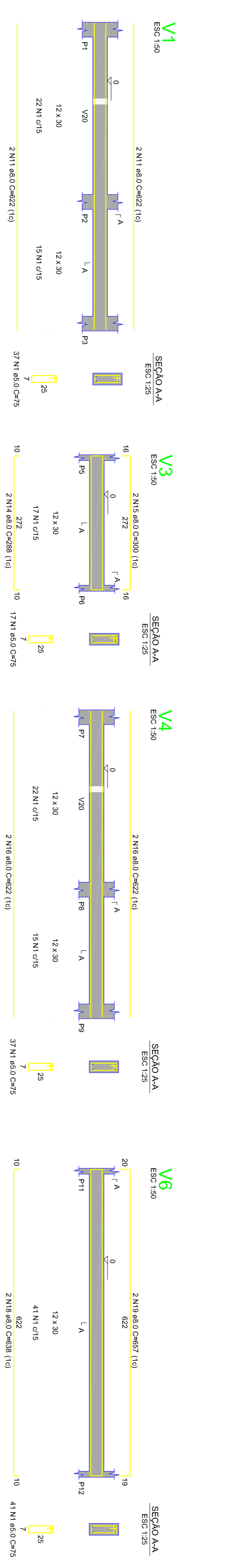
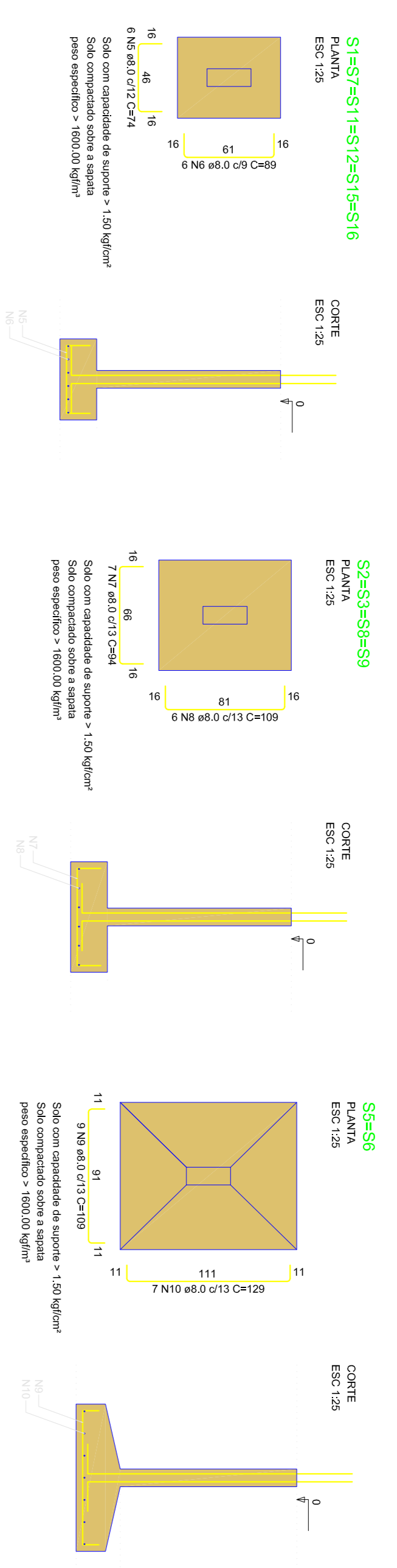


RESUMO DO AÇO (kg/m³)

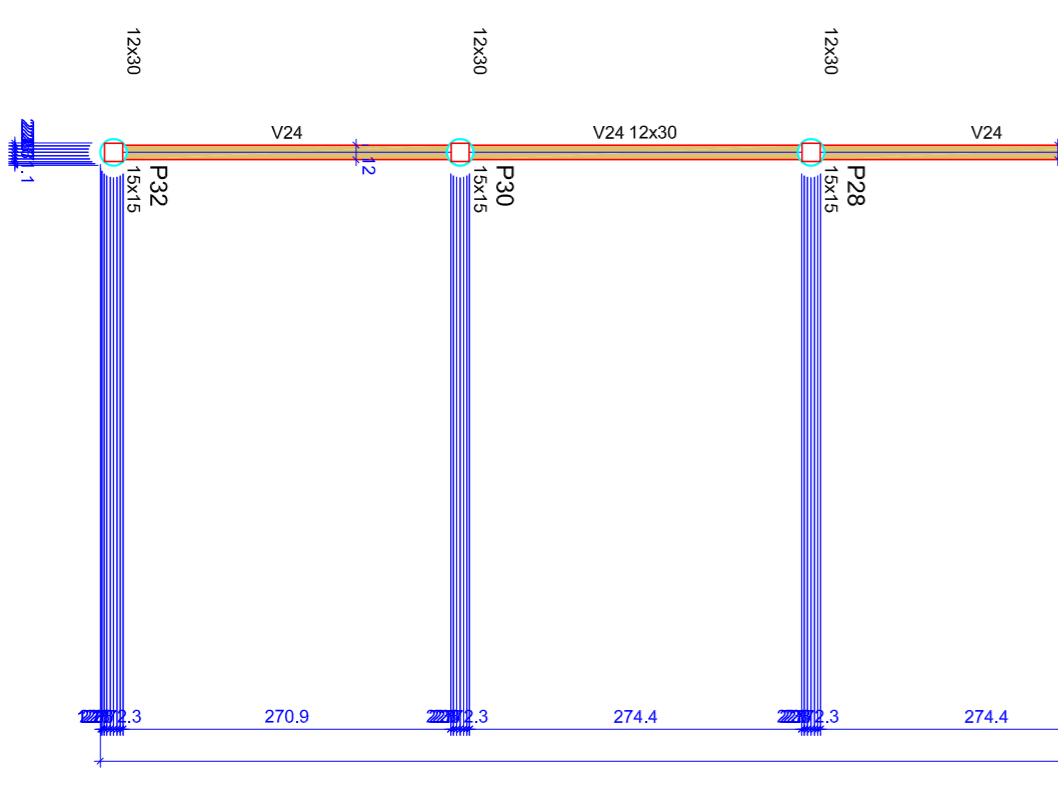
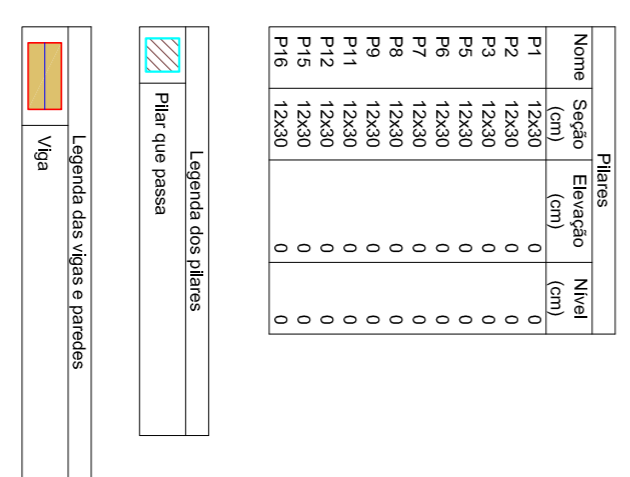
| ACAO                   | DIMEN (mm) | QTOTAL (m) | PESO = 10% (kg) |
|------------------------|------------|------------|-----------------|
| C450                   | 80         | 148,9      | 64,7            |
| <b>PESO TOTAL (kg)</b> |            |            | <b>64,7</b>     |

Volume de concreto (C-25) = 188 m³



| Nome | Seção | Eixo | Extensão | Reforço |
|------|-------|------|----------|---------|
| V1   | 12x30 | 0    | 0        | 0       |
| V2   | 12x30 | 0    | 0        | 0       |
| V3   | 12x30 | 0    | 0        | 0       |
| V4   | 12x30 | 0    | 0        | 0       |
| V5   | 12x30 | 0    | 0        | 0       |
| V6   | 12x30 | 0    | 0        | 0       |
| V7   | 12x30 | 0    | 0        | 0       |
| V8   | 12x30 | 0    | 0        | 0       |
| V9   | 12x30 | 0    | 0        | 0       |
| V10  | 12x30 | 0    | 0        | 0       |
| V11  | 12x30 | 0    | 0        | 0       |
| V12  | 12x30 | 0    | 0        | 0       |
| V13  | 12x30 | 0    | 0        | 0       |
| V14  | 12x30 | 0    | 0        | 0       |
| V15  | 12x30 | 0    | 0        | 0       |
| V16  | 12x30 | 0    | 0        | 0       |
| V17  | 12x30 | 0    | 0        | 0       |
| V18  | 12x30 | 0    | 0        | 0       |
| V19  | 12x30 | 0    | 0        | 0       |
| V20  | 12x30 | 0    | 0        | 0       |
| V21  | 12x30 | 0    | 0        | 0       |
| V22  | 12x30 | 0    | 0        | 0       |
| V23  | 12x30 | 0    | 0        | 0       |
| V24  | 12x30 | 0    | 0        | 0       |
| V25  | 12x30 | 0    | 0        | 0       |
| V26  | 12x30 | 0    | 0        | 0       |
| V27  | 12x30 | 0    | 0        | 0       |

| Condição | Reforço               | Extensão |
|----------|-----------------------|----------|
| 1        | 2 N16 a6,0 C422 (16)  | 0        |
| 2        | 2 N18 a6,0 C422 (16)  | 0        |
| 3        | 2 N20 a6,0 C427 (16)  | 0        |
| 4        | 2 N22 a6,0 C428 (16)  | 0        |
| 5        | 2 N24 a6,0 C429 (16)  | 0        |
| 6        | 2 N26 a6,0 C430 (16)  | 0        |
| 7        | 2 N28 a6,0 C431 (16)  | 0        |
| 8        | 2 N30 a6,0 C432 (16)  | 0        |
| 9        | 2 N32 a6,0 C433 (16)  | 0        |
| 10       | 2 N34 a6,0 C434 (16)  | 0        |
| 11       | 2 N36 a6,0 C435 (16)  | 0        |
| 12       | 2 N38 a6,0 C436 (16)  | 0        |
| 13       | 2 N40 a6,0 C437 (16)  | 0        |
| 14       | 2 N42 a6,0 C438 (16)  | 0        |
| 15       | 2 N44 a6,0 C439 (16)  | 0        |
| 16       | 2 N46 a6,0 C440 (16)  | 0        |
| 17       | 2 N48 a6,0 C441 (16)  | 0        |
| 18       | 2 N50 a6,0 C442 (16)  | 0        |
| 19       | 2 N52 a6,0 C443 (16)  | 0        |
| 20       | 2 N54 a6,0 C444 (16)  | 0        |
| 21       | 2 N56 a6,0 C445 (16)  | 0        |
| 22       | 2 N58 a6,0 C446 (16)  | 0        |
| 23       | 2 N60 a6,0 C447 (16)  | 0        |
| 24       | 2 N62 a6,0 C448 (16)  | 0        |
| 25       | 2 N64 a6,0 C449 (16)  | 0        |
| 26       | 2 N66 a6,0 C450 (16)  | 0        |
| 27       | 2 N68 a6,0 C451 (16)  | 0        |
| 28       | 2 N70 a6,0 C452 (16)  | 0        |
| 29       | 2 N72 a6,0 C453 (16)  | 0        |
| 30       | 2 N74 a6,0 C454 (16)  | 0        |
| 31       | 2 N76 a6,0 C455 (16)  | 0        |
| 32       | 2 N78 a6,0 C456 (16)  | 0        |
| 33       | 2 N80 a6,0 C457 (16)  | 0        |
| 34       | 2 N82 a6,0 C458 (16)  | 0        |
| 35       | 2 N84 a6,0 C459 (16)  | 0        |
| 36       | 2 N86 a6,0 C460 (16)  | 0        |
| 37       | 2 N88 a6,0 C461 (16)  | 0        |
| 38       | 2 N90 a6,0 C462 (16)  | 0        |
| 39       | 2 N92 a6,0 C463 (16)  | 0        |
| 40       | 2 N94 a6,0 C464 (16)  | 0        |
| 41       | 2 N96 a6,0 C465 (16)  | 0        |
| 42       | 2 N98 a6,0 C466 (16)  | 0        |
| 43       | 2 N100 a6,0 C467 (16) | 0        |



Forma do pavimento Fundação

APPROVAÇÃO:

CELSO LOPES BARROSO  
PREFEITURA MUNICIPAL DE TUCUMÃ

---

PREFEITURA MUNICIPAL DE TUCUMÃ

PROJETO: APLICAÇÃO E RECOMENDAÇÃO DA ENERJANA DE ANGELOS DO MUNICÍPIO DE TUCUMÃ - PA

RESUMO TÉCNICO: EMBL. JOANA DE ANGEIS

RESPONSÁVEL TÉCNICO: LENARDINO LINDAS APARELHO - ARQUITETO E URBANISTA - CAD. 2529922/24

CONTEÚDO DO PROJETO: PLANTA DE LOCAÇÃO, ARMAÇÕES DAS FUNDAÇÕES, VIGAS E PILARES E TABELAS QUANTITATIVAS DO AÇO.

ESCALA: INDICADA

PROJETO: ESTRUTURAL

DATA DO PROJETO: 01/04

PROJETO: 0000