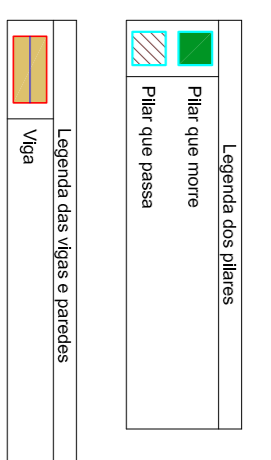
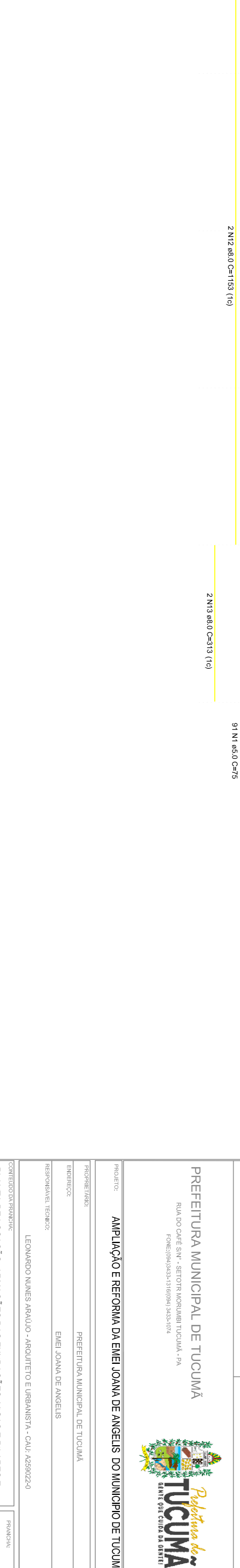
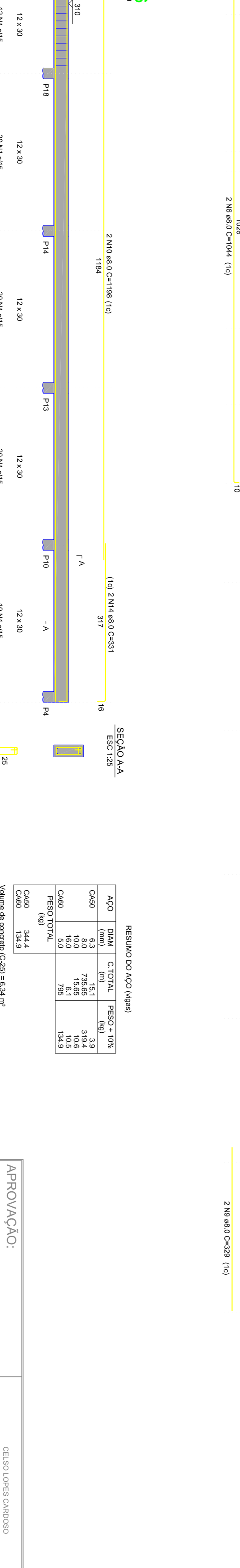
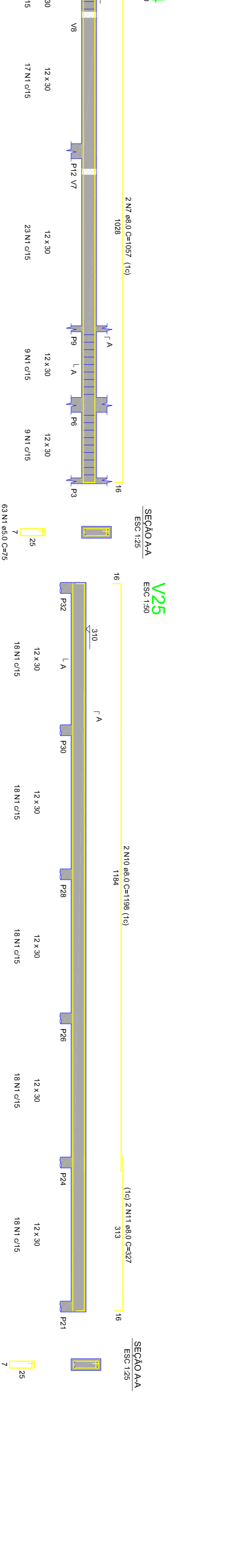
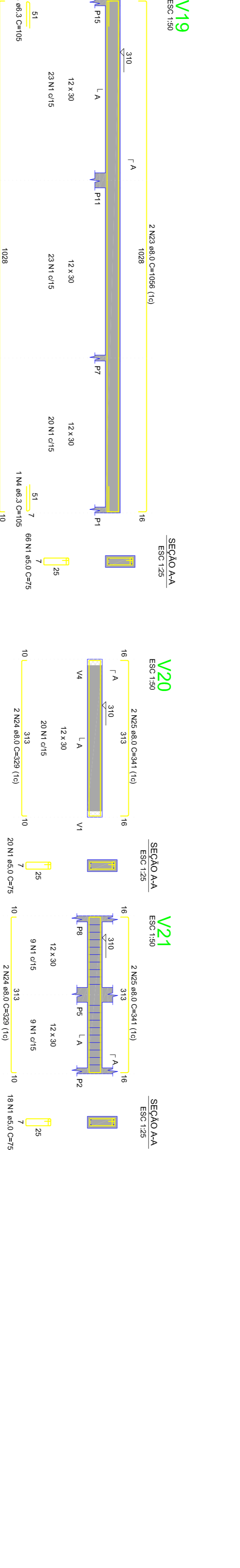
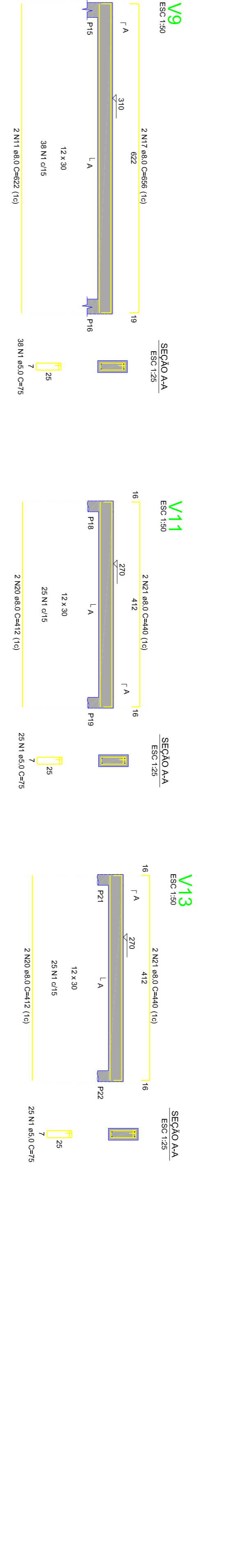
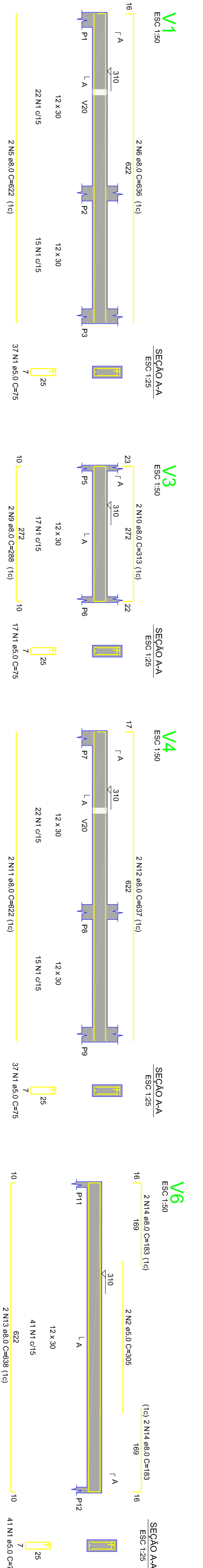
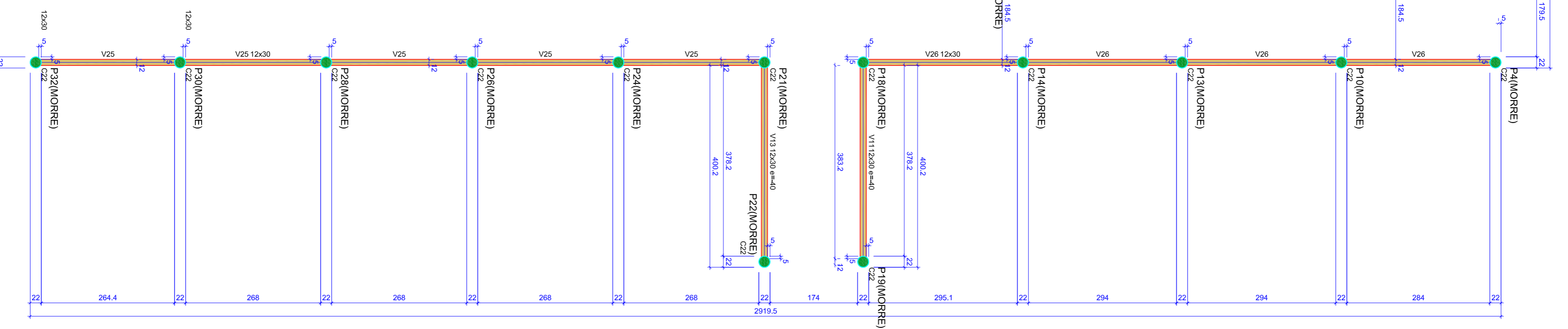


Nome	Seção	Estrutura	Núm. de Vigas	Núm. de Pilares
V1	12x30	C22	1	310
V2	12x30	C22	1	310
V3	12x30	C22	1	310
V4	12x30	C22	1	310
V5	12x30	C22	1	310
V6	12x30	C22	1	310
V7	12x30	C22	1	310
V8	12x30	C22	1	310
V9	12x30	C22	1	310
V10	12x30	C22	1	310
V11	12x30	C22	1	310
V12	12x30	C22	1	310
V13	12x30	C22	1	310
V14	12x30	C22	1	310
V15	12x30	C22	1	310
V16	12x30	C22	1	310
V17	12x30	C22	1	310
V18	12x30	C22	1	310
V19	12x30	C22	1	310
V20	12x30	C22	1	310
V21	12x30	C22	1	310
V22	12x30	C22	1	310
V23	12x30	C22	1	310
V24	12x30	C22	1	310
V25	12x30	C22	1	310
V26	12x30	C22	1	310
V27	12x30	C22	1	310



Nome	Seção	Estrutura	Núm. de Vigas	Núm. de Pilares
P1	12x30	C22	0	310
P2	12x30	C22	0	310
P3	12x30	C22	0	310
P4	12x30	C22	0	310
P5	12x30	C22	0	310
P6	12x30	C22	0	310
P7	12x30	C22	0	310
P8	12x30	C22	0	310
P9	12x30	C22	0	310
P10	12x30	C22	0	310
P11	12x30	C22	0	310
P12	12x30	C22	0	310
P13	12x30	C22	0	310
P14	12x30	C22	0	310
P15	12x30	C22	0	310
P16	12x30	C22	0	310
P17	12x30	C22	0	310
P18	12x30	C22	0	310
P19	12x30	C22	0	310
P20	12x30	C22	0	310
P21	12x30	C22	0	310
P22	12x30	C22	0	310
P23	12x30	C22	0	310
P24	12x30	C22	0	310



RESUMO DO AÇO (kg/m³)

ACO	QTD	CTOTL	PRESO - 10%
C40	8.0	738.6	318.4
C40	10.0	156.6	101.6
C40	5.0	78.3	18.8
C40	134.9	134.9	134.9

Volume de concreto (C=20) = 6.34 m³

Forma do pavimento Pavimento Térreo

PREFEITURA MUNICIPAL DE TUQUAMA
 Rua do Café S/N - Centro - Município de Tuquama - PA
 Fone: (081) 3522-2100 - e-mail: prefeitura@tuquama.pa.gov.br

AMPLIAÇÃO E REFORMA DA EMEL JOANA DE ANGELO DO MUNICÍPIO DE TUQUAMA - PA

PROJETO: AMPLIAÇÃO E REFORMA DA EMEL JOANA DE ANGELO DO MUNICÍPIO DE TUQUAMA - PA
 EXECUÇÃO: PREFEITURA MUNICIPAL DE TUQUAMA
 RESPONSÁVEL TÉCNICO: EMBE JOANA DE ANGELO

CONTEÚDO DO PROJETO: LEVANTAMENTO AEROFOTOGRAFICO E URBANÍSTICO - CADASTRO
 TABELAS QUANTITATIVAS DO AÇO.

PROJETO: 02/04

CELOS LOPES CORREIO
 PREFEITURA MUNICIPAL DE TUQUAMA